



# Symphonia Control

**SAFE CITY AND INTELLIGENT MOBILITY  
CONFERENCE- INDIA- AUG. 22, 2024**

Anand Navani- Country Director, India

# CHALLENGES BEFORE US TO MAKE OUR CITIES AND CAMPUS SAFE.....

- Diversity
- Standardization
- Accountability
- Usability
- Performance Measurement

“Technology alone is not enough”

- *By Steve Jobs*

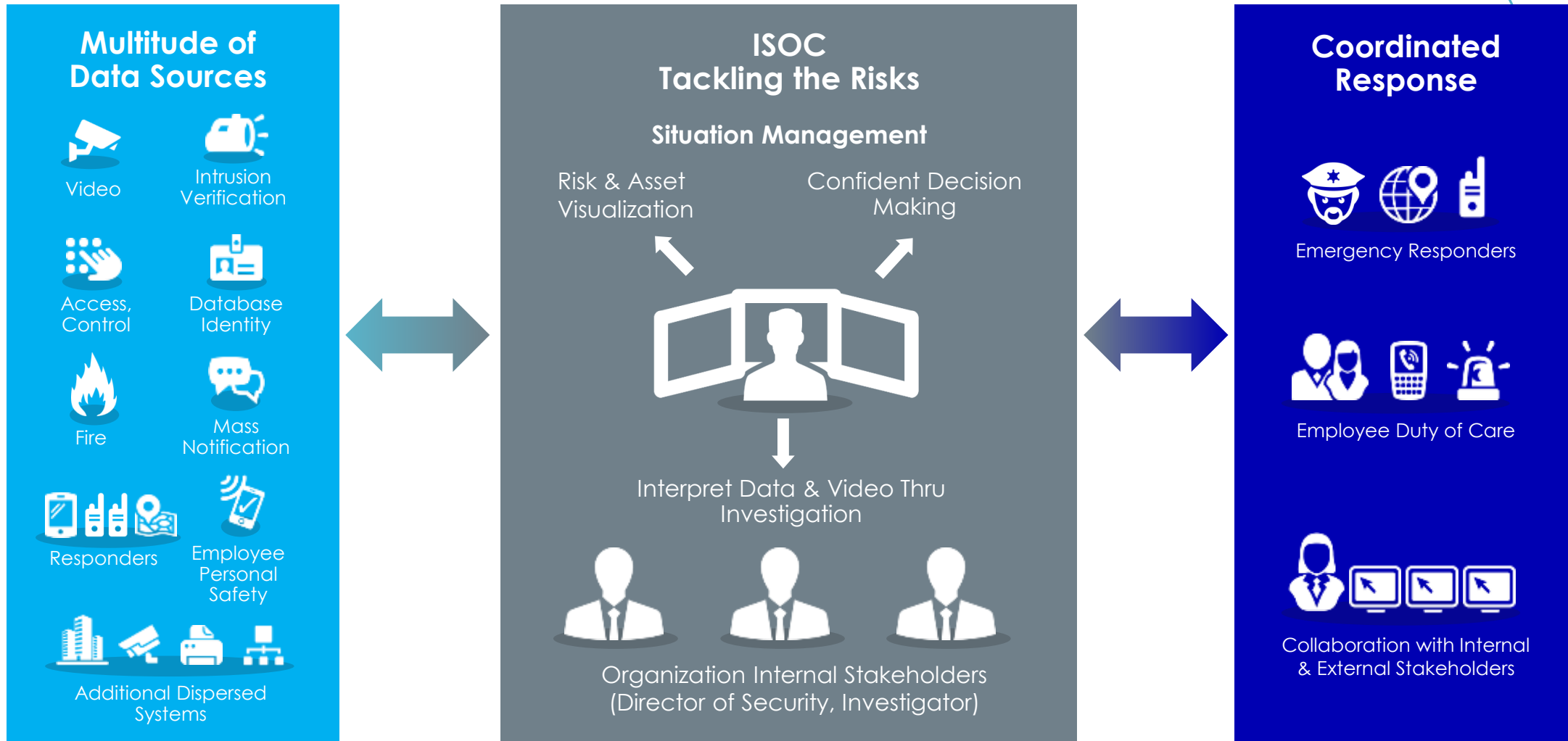


## WHAT IF INTELLICENE COULD?

Connect all the dots for you to better see the Complete Security Picture?



# MOST IMPORTANT CHALLENGE TO OUR CITIES AND CAMPUS..



# SYMPHIA CONTROL

- A single platform which encompasses Intelligent SOC Solution
- The Heart of the Unified Security Command Center



# QUICKLY ATTAIN THE INTELLIGENCE TO ACT

- Increase Operator efficiency and awareness.
  - Playing live / recorded video from the source camera when an alarm and/or Incident are triggered, and from the associated cameras
  - Two way alarm status synchronization
  - Action upon Alarm and Incidents
- Devices and connected systems operational\connection state
- Mission Critical – persistency mechanisms ensuring events from integrated systems arrives to recipients
- Health alerts - warning and error alerts reported by all the solution components

Extensive Bi-directional integrations

The screenshot displays the 'Event Details' section of the Intellicene software. It features a table with columns for Date/Time, First Name, Last Name, Badge Image, Badge Number, Status, and Reason. Below this, there is a list of actions for various devices and systems, such as 'Ambulance - Clear panic', 'Fire truck - Release vehicle', and 'Police car - Stop vehicle'. The interface also includes a search bar and a list of device statuses.

Date/Time	First Name	Last Name	Badge Image	Badge Number	Status	Reason
1/26/2014 12:00:07 AM	John	Door	[Image]	12345	Reverted	Reported stolen
8/1/2012 12:00:06 AM	John	Door	[Image]	12345	Reverted	Lost badge
7/15/2012 12:00:05 AM	John	Door	[Image]	12345	Active	Sound

ACS System

Badge Number	Door	Status
12345	F1-017	Access Granted
12345	H0-007	Access Granted
12345	F1-017	Access Granted
12345	F2-013	Access Granted

Actions List:

- Ambulance - Clear panic
- Ambulance - Release vehicle
- Ambulance - Stop vehicle
- Arm gate - Close
- Arm gate - Emergency Stop
- Arm gate - Hold Open
- Arm gate - Open
- Camera - Go to Preset
- Digital Preset - Go to Preset
- Door - Bypass occupancy limit
- Door - Close
- Door - Default
- Door - Grace next swipe
- Door - Lock
- Door - One Pass
- Door - Open
- Door - Reset
- Door - Secure
- Door - Unlock
- Door - Unsecure
- Event Handler - Handle events
- Fire Detector - Reset
- Fire truck - Clear panic
- Fire truck - Release vehicle
- Fire truck - Stop vehicle
- Gate - Open gate
- Grill gate - Close
- Grill gate - Emergency Stop
- Grill gate - Hold Open
- Grill gate - Open
- Help Point - Answer Help Point
- Help Point - Hang Up Help Point
- Intrusion Detector - Arm
- Intrusion Detector - Disable
- Intrusion Detector - Disarm
- Intrusion Detector - Enable
- LPR Camera - Open gate
- Output Relay - Close
- Output Relay - Open
- Panel - Arm
- Panel - Disarm
- Panel - Silence alarm
- Police car - Clear panic
- Police car - Release vehicle
- Police car - Stop vehicle
- Retractable bollard - Close
- Retractable bollard - Emergency Stop
- Retractable bollard - Hold Open
- Retractable bollard - Open
- Vehicle - Clear panic
- Vehicle - Release vehicle
- Vehicle - Stop vehicle
- Video Tracking Server - Target re-identification
- Wedge barrier - Close
- Wedge barrier - Emergency Stop
- Wedge barrier - Hold Open
- Wedge barrier - Open

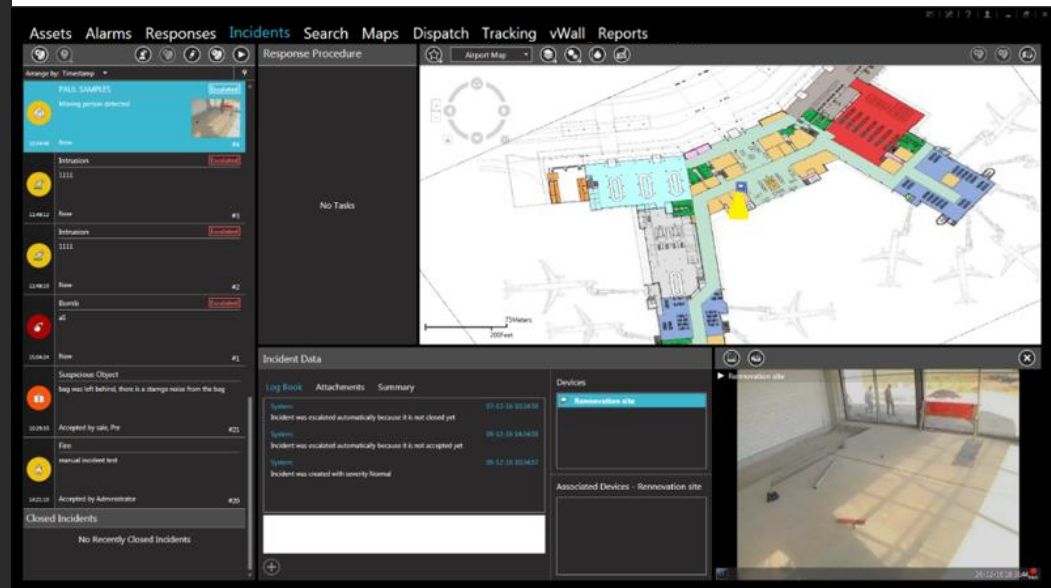
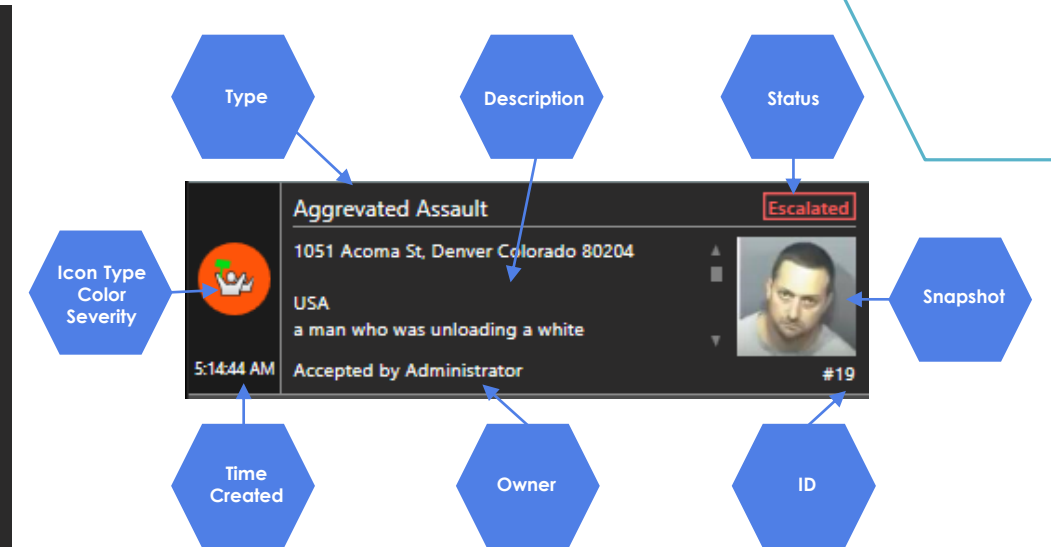
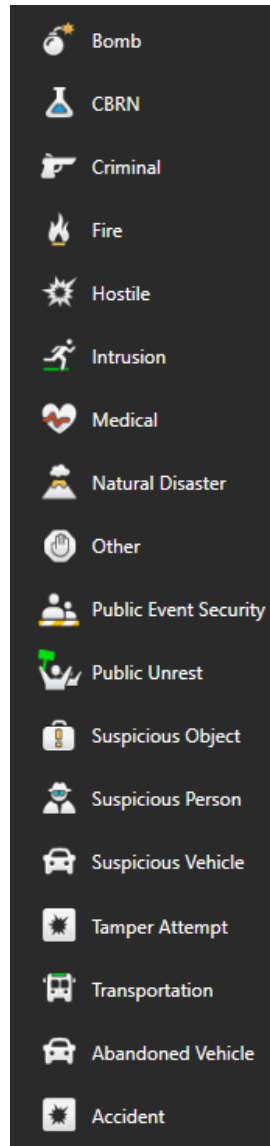


# INCIDENT MANAGEMENT

## SITUATION AWARENESS

### Incident Supporting Information

- Built in Incident types covering the safety/security field and support for end user to create its own custom incident types
- Map with location of incidents, alarms, devices and other assets.
- Video Preview pane: video from camera that is part of incident
- Live and recorded video streams are played
- Devices pane: control devices that are related to the incident
- Log Book





# FORCE MULTIPLIER IN INCIDENT MANAGEMENT

- Response Orchestration of all crisis activities, teams, resources and communications in one application
- Collaboration between SOC operators to forces and employees / citizens in the field



Reporter App



Operator

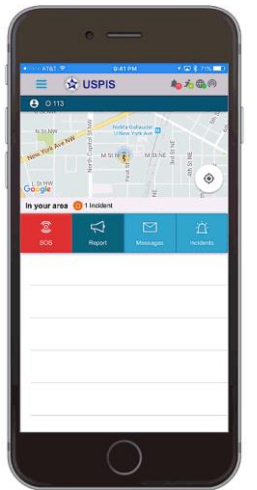


Responder App



QUICKLY ATTAIN THE INTELLIGENCE TO ACT

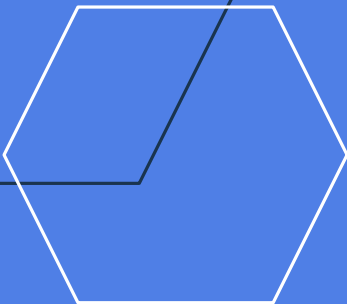
# Complete Dispatch and Response Activation Upon Alarm



# THE POWER OF SYMPHIA CONTROL AND SYMPHIA INSIGHT

- Symphia Insight provides a data visualization framework, enabling organizations to present historical data from Symphia Control into a live dashboard on any data visualization platform the organization uses.
- The visual representation of the data creates value to the organization. It makes it possible to draw conclusions about the utilization of teams, the capacity and distribution of events, and exposes potential and existing risks and problems.





# CUSTOMER SUCCESS STORY- SURAT DIAMOND BOURSE, SURAT- INDIA

*INTELLICENE DEPLOYED ITS CONTROL AND VIDEO  
PLATFORM IN A SHORT SPAN OF UNDER A YEAR  
INCLUDING CRITICAL 3<sup>RD</sup>. PARTY INTEGRATIONS IN  
THE PROJECT.*





# SURAT DIAMOND BOURSE- INDIA

## About:

Surat Diamond Bourse (SDB) is World's Largest Office Campus:

## Challenge:

How to integrated multiple independent systems like **Surveillance, Building management, Communications, Fire, Access and X-Ray** to a single iSoC on real-time.

## What are we delivering:

*We delivered a Unified iSOC capable of giving actionable intellicene from 8000 cameras, 400 access controlled gates handling 60000 visitors/employees everyday. 90 Data center Operators use Symphia Control 24x7 from 50 Work stations to get immediate alert from 1000 Edge enabled Video Analytics cameras. 500 Fire Alarm panels, even one if activated will generate an alert within seconds on our control platform and each Operator can initiate 90 unique SOP's to mitigate any risk.*





THANK YOU